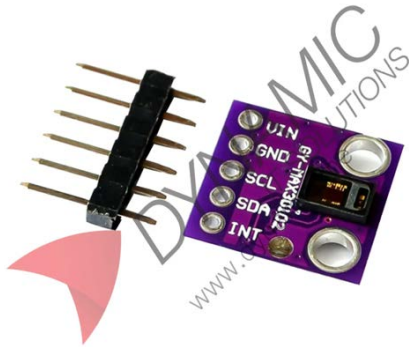


Heart Rate Pulse Oxygen Sensor Module GY- MAX30102



Features:

The GY-MAX30102 module integrates Maxim's MAX30102 sensor, combining red and infrared LEDs with a photodetector and analog front end to measure pulse rate and blood oxygen saturation. Its I2C communication simplifies integration with microcontrollers, and its low-noise circuitry ensures stable, accurate readings. The compact module design allows it to be embedded into fitness trackers, medical monitors, and wearable health systems.

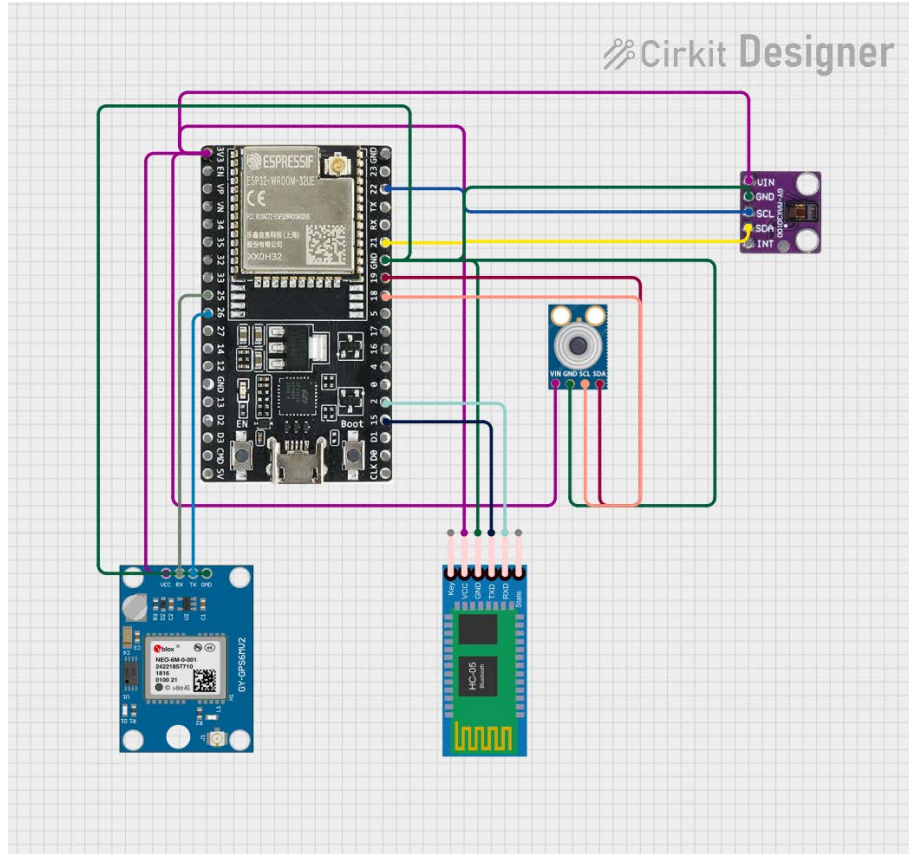
Specifications

Power Supply Voltage	3V to 5V
Communication Interface	I2C
LED Wavelengths	Red and Infrared
Dimensions	14 x 14mm
Signal Processing	Low-noise analog circuit
Operating Mode	Pulse oximetry and heart rate measurement
Color	Purple
Usage	Health monitoring and wearable fitness devices

Pinouts:

Pin Name	Type	Description
VIN	Power	Power supply input 3V to 5V
GND	Ground	Ground connection
SCL	I2C Clock	Serial clock line for I2C communication
SDA	I2C Data	Serial data line for I2C communication
INT	Interrupt	Signal output for data ready indication





Product Pictures:

