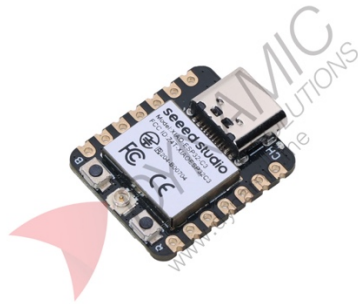


Seeed Studio XIAO ESP32-C3



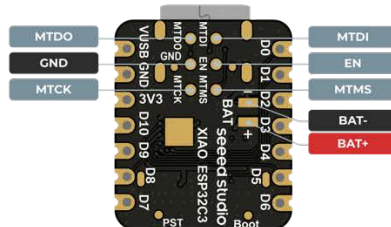
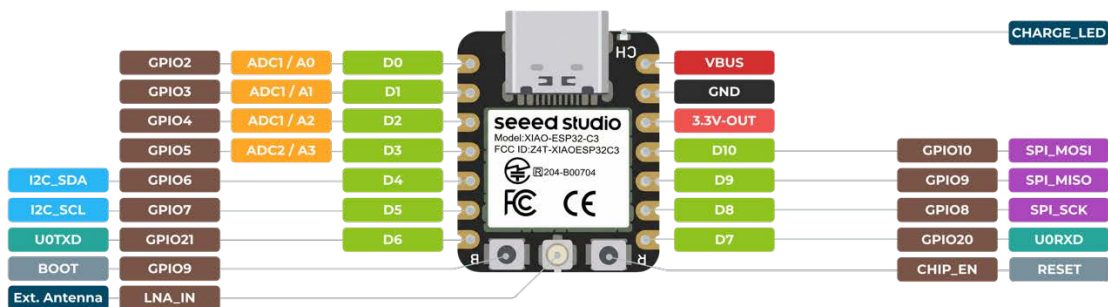
Features:

The Seeed Studio XIAO ESP32-C3 is a compact IoT mini development board based on the Espressif ESP32-C3 chip with a 32-bit RISC-V processor, Wi-Fi, Bluetooth Low Energy 5.0, Bluetooth Mesh, external RF antenna, battery charging support, low power modes, and rich interfaces for wearable and wireless IoT applications.

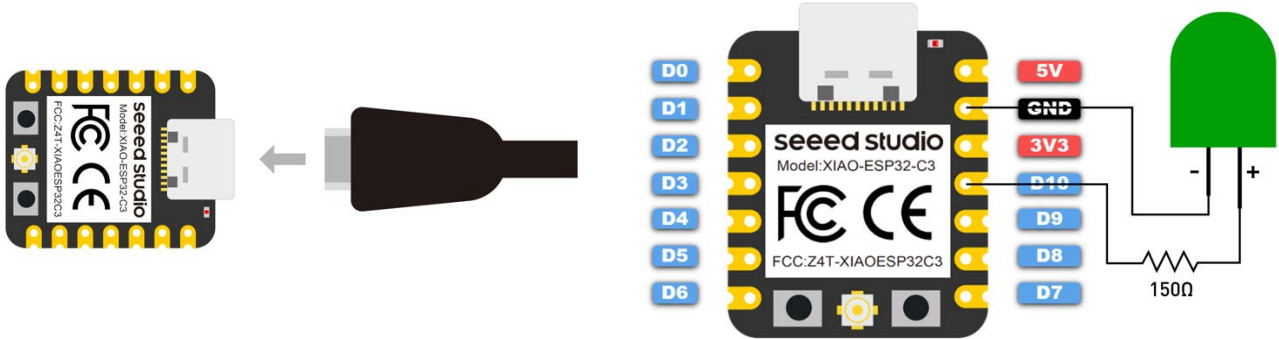
Specifications	
Product Name	Seeed Studio XIAO ESP32-C3
Processor	ESP32-C3 SoC
CPU	RISC-V single-core 32-bit processor with four-stage pipeline
Clock Speed	Up to 160MHz
Wireless	2.4GHz Wi-Fi subsystem
Wi-Fi Protocol	IEEE 802.11 b/g/n
Bluetooth	Bluetooth Low Energy 5.0, Bluetooth Mesh
On-chip Memory	400KB SRAM
Flash Memory	4MB Flash
UART	1x
I2C	1x
SPI	1x
GPIO	11x GPIO PWM
ADC	4x ADC
Buttons	1x Reset button, 1x Boot button
Dimensions	21 x 17.8mm
Max 3.3V Output Current	500mA
Test Condition	BAT Pin Input at 3.8V
Source Capability	3A
Charging Current	380mA Fast, 40mA Trickle
Input Voltage VIN	5V
Input Voltage BAT	3.7V
Deep Sleep Power Consumption	44uA
Wi-Fi Active Mode Power Consumption	75mA
Wi-Fi Modem-sleep Mode Power Consumption	25mA

Wi-Fi Light-sleep Mode Power Consumption	4mA
BLE Modem-sleep Mode Power Consumption	27mA
BLE Light-sleep Mode Power Consumption	10mA
Working Temperature	-40C to 85C
External Antenna	Included
Battery Charging Chip	Supports lithium battery charge and discharge management
Security Features	AES-128/256, Hash, RSA, HMAC, digital signature, secure boot
Mounting Design	Single-sided components, surface mounting design
5V Pin	5V output from USB port or voltage input with diode
3V3 Pin	Regulated output from onboard regulator, 700mA draw
GND Pin	Power, data, and signal ground
Usage	Low-power IoT applications, wireless wearable applications, small projects, sensor monitoring

Pinouts:



Wiring:



Product Pictures:

