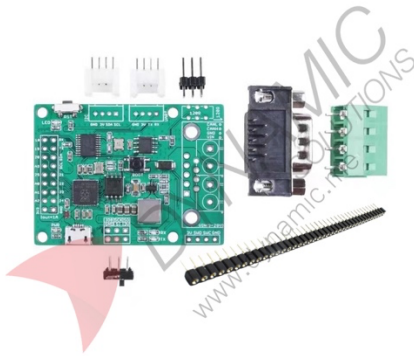


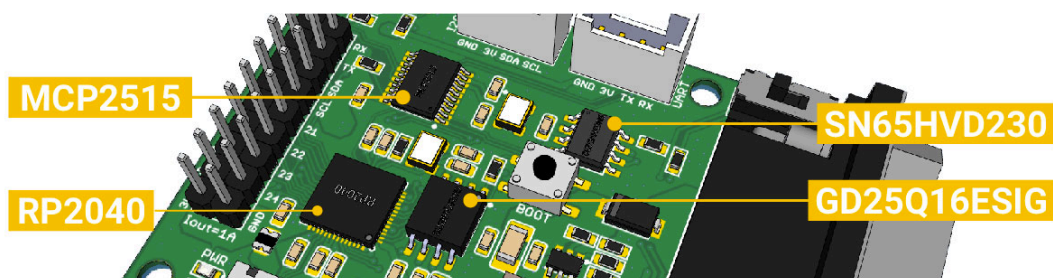
CANBed RP2040 CAN Bus Development Kit



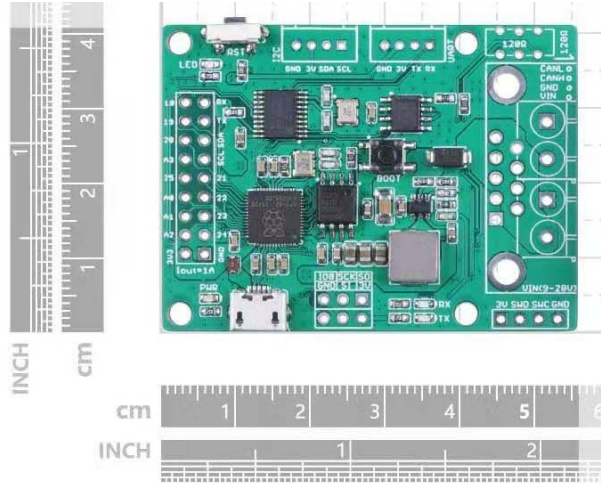
Features:

The CANBed RP2040 Dev Kit is a CAN Bus development board based on the RP2040 MCU with MCP2515 CAN controller and MCP2551 CAN receiver. It supports CAN V2.0B communication up to 1 Mb/s and provides flexible CAN connection through a DB9 connector or 4-pin terminal. The board includes Micro-USB programming, I2C, UART, SPI, analog inputs, digital I/Os, and selectable OBD-II or CAN standard pinout at the sub-D connector.

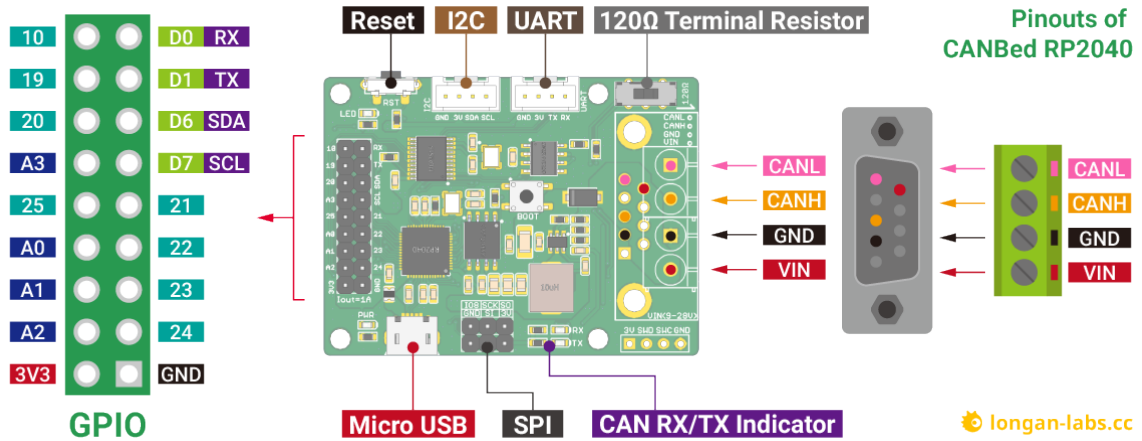
Specifications	
MCU	RP2040
Clock Speed	Up to 133 MHz
CAN Controller	MCP2515
CAN Receiver	MCP2551
CAN Protocol	CAN V2.0B
CAN Speed	Up to 1 Mb/s
Flash Memory	2MB
RAM	264KB
Operating Voltage	9-28V
Output Current at 3.3V	1A
CAN Interface	DB9 connector or 4-pin terminal
Input Interface	Sub-D
Programming Interface	Micro-USB
Other Interfaces	I2C, UART, SPI, 3 analog inputs, 8 digital I/Os
Connector	2x4-pin connector compatible with Grove system
Frame Support	Standard 11-bit and extended 29-bit data and remote frames
Included Parts	CANBed RP2040 PCBA, sub-D connector, 4-pin terminal, 2 x 4-pin HY2.0 connectors, 33x1 2.54 header, 3x3 2.54 header, switch for 120 ohm terminal resistor
Usage	CAN Bus communication learning, product prototyping, car data reading, and embedded CAN applications



Product Size:



Pinouts:



Product Pictures:

