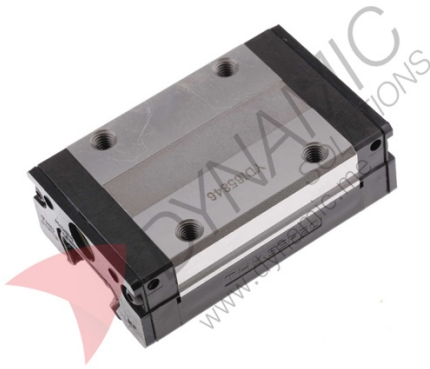


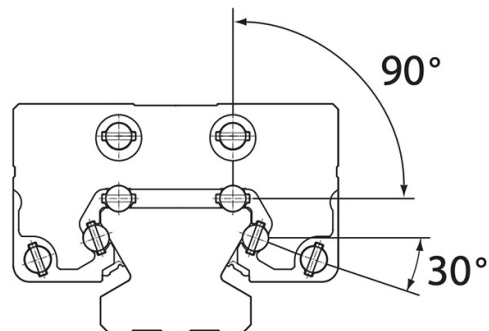
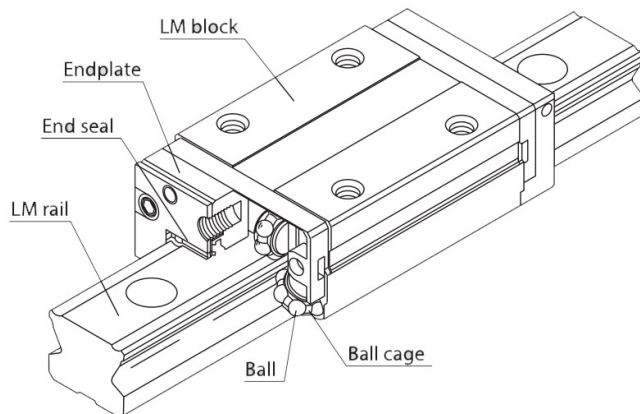
# THK Linear Guide Carriage SSR20XW1SS



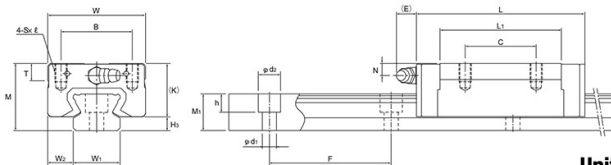
**Features:**

The THK SSR20XW1SS Linear Guide Carriage, part of the SSR-XW series, integrates THK's advanced caged-ball technology for superior performance and long-term reliability. The design minimizes friction between rolling elements, resulting in low noise, smooth operation, and reduced maintenance requirements. Its DF (face-to-face) circular-arc groove structure provides exceptional self-alignment and precise linear movement even under preload. This compact, standard-type block with top-face mounting holes is ideal for compact, high-accuracy machinery, CNC systems, and industrial automation setups.

Specifications	
Manufacturer	THK
Model	SSR20XW1SS
Series	SSR-XW
For Rail Width	20 mm
Carriage Length	66.5 mm
Carriage Width	42 mm
Dynamic Load Rating	19.6 kN
Static Load Rating	23.4 kN
Structure	Caged Ball, DF Groove
Noise Level	Low
Alignment	Self-Aligning
Accuracy	High Planar Running Accuracy
Block Type	Standard Type with Top-Face Tapped Holes
Maintenance	Long-Term Maintenance-Free
Application Orientation	Horizontal or Compact Design Units
Usage	Linear motion guidance for CNC and automation applications



## SSR-XW:



Unit = mm

MODEL NO.	OUTER DIMENSIONS			LM BLOCK DIMENSIONS									W <sub>2</sub>	H <sub>3</sub>	BASIC LOAD RATING		STATIC PERMISSIBLE MOMENT kN-M					MASS kg
	HEIGHT M	WIDTH W	LENGTH L	B	C	S x ℓ	L <sub>1</sub>	T	K	N	E	GREASE NIPPLE			C kN	C0 kN	MA		MB		MC	
																	1 BLOCK	DOUBLE BLOCK	1 BLOCK	DOUBLE BLOCK	1 BLOCK	
SSR 15XW	24	34	56.9	26	26	M4x7	39.9	6.5	19.5	4.5	5.5	PB1021B	9.5	4.5	14.7	16.5	0.0792	0.44	0.0486	0.274	0.0962	0.15
SSR 20XW	28	42	66.5	32	32	M5x8	46.6	8.2	22	5.5	12	B-M6F	11	6	19.6	23.4	0.138	0.723	0.0847	0.448	0.18	0.25
SSR 25XW	33	48	83	35	35	M6x9	59.8	8.4	26.2	6	12	B-M6F	12.5	6.8	31.5	36.4	0.258	1.42	0.158	0.884	0.33	0.4
SSR 30XW	42	60	97	40	40	M8x12	70.7	11.3	32.5	8	12	B-M6F	16	9.5	46.5	52.7	0.446	2.4	0.274	1.49	0.571	0.8
SSR 35XW	48	70	110.9	50	50	M8x12	80.5	13	36.5	8.5	12	B-M6F	18	11.5	64.6	71.6	0.711	3.72	0.437	2.31	0.936	1.1

## Model and Types of LLM Block:

MODEL	TYPE	FEATURES
SSR-XW	Standard Type	<ul style="list-style-type: none"> <li>With this type, the LM block has a smaller width and tapped holes on the top face of the block.</li> <li>This is suitable for design compact in the height and width dimensions.</li> </ul>
SSR-XV	Short Type	<ul style="list-style-type: none"> <li>A space-saving type whose LM block has the same cross-sectional shape as model SSR-XW, but has a smaller overall LM block length.</li> </ul>

## Model Number Coding:

BLOCK						
MODEL NUMBER	BLOCK TYPE	BLOCK QUANTITY	SEAL TYPE	RADIAL CLEARANCE	SYMBOL FOR INTERCHANGEABLE BLOCK & RAIL	SAMPLE PART NUMBER
SSR20	XV	1	SS	C1	(GK)	SSR20XV1SSC1(GK) BLOCK
		Standard for interchangeable blocks = 1	Standard for SSR*: Contamination Protection Seal "SS"	Normal Clearance = No Symbol; Light Preload = C1		

: Choose Quick-Ship Option  
 : Standard/Only Quick Ship Option

**Product Pictures:**

