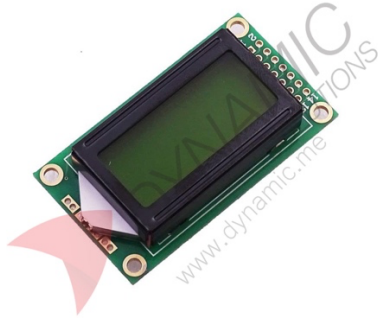


LCD Module Screen 0802



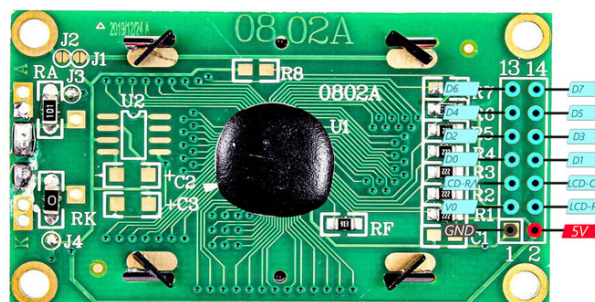
Features:

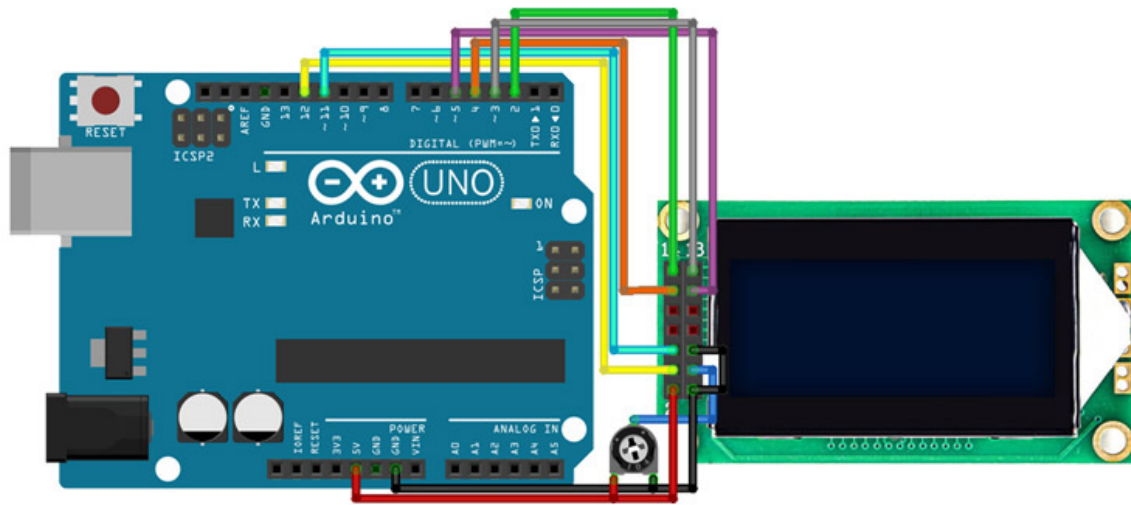
The 0802 LCD module is a low-power character display that provides 8 characters × 2 lines of clear text. With a built-in controller, it supports direct interfacing with microcontrollers, making it suitable for embedded applications. Its blue backlight with black characters ensures high contrast and readability in different environments. Compact in size and reliable in performance, it is ideal for industrial control panels, test instruments, educational projects, and DIY electronics.

Specifications	
Model	0802 LCD
Display Format	8 × 2 characters
Working Voltage	5V DC
Backlight	Blue with black characters
Module Size	58 × 32 × 10.5 mm
Viewing Area	38 × 16 mm
Character Size	2.96 × 5.56 mm
Interface	14-pin parallel
Usage	Display for embedded systems, microcontroller projects, and instrumentation

Pinouts:

Pin Name	Type	Description
D0–D7	Data	Parallel data bus
LCD-RA	Control	Read/Write enable
LCD-CS	Control	Chip select
LCD-RS	Control	Register Select
V0	Power	Contrast adjustment input
GND	Power	Ground
5V	Power	Supply voltage





Product Pictures:

