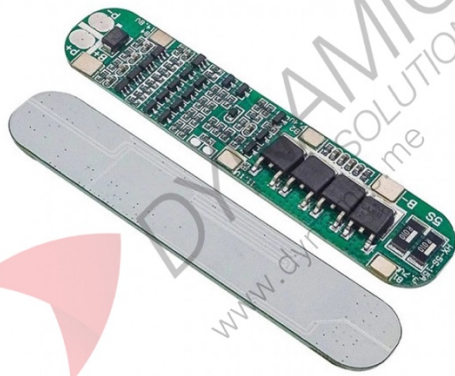


Lithium Battery Charge Module 5S

18.5v 21v BMS



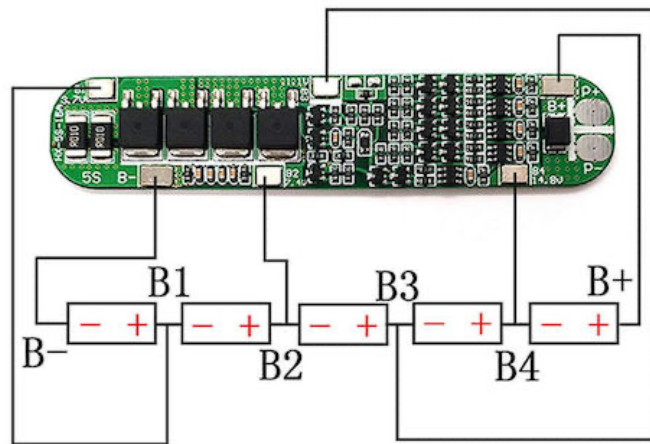
Features:

The 5S lithium battery charge module is designed to manage and protect 5-series (18.5V nominal, 21V max) lithium packs. Supporting continuous discharge up to 15A and instantaneous peaks up to 25A, it integrates multiple safety features including overcharge, over-discharge, short-circuit, and over-current protection. The module consumes very little current in operation and ensures long-term battery safety and reliability. With its compact PCB size, it is ideal for DIY energy systems, robotics, portable power devices, and custom battery pack applications.

Specifications	
Battery Configuration	5S (5 x 3.7V/4.2V cells)
Continuous Discharge Current	15A (max)
Instantaneous Discharge Current	25A
Charge Voltage	21V
Maximum Charging Current	15A
Overcharge Detection Voltage	4.28 ± 0.05V
Overcharge Protect Delay	0.5s
Overcharge Release Voltage	4.28 ± 0.05V
Over-discharge Detection Voltage	2.55 ± 0.08V
Over-discharge Delay	0.1s
Over-discharge Release Voltage	2.9 ± 0.1V
Short-circuit Protect Condition	Cut load
Short-circuit Detect Delay	250 μs
Over-current Detect Voltage	150 mV
Over-current Detect Delay	9 ms
Over-current Cutoff	30 ± 3A
Inner Resistance	≤20 mΩ
Working Current	≤30 μA
Sleep Current (overcharge)	≤10 μA
Operating Temperature	-30°C to +80°C
PCB Dimensions	88 x 16 mm
Usage	5S lithium battery packs for energy storage, robotics, and portable devices

Pinouts:

Pin Name	Type	Description
P+	Power	Pack positive output
P-	Power	Pack negative output
B+	Battery	Battery positive terminal
B-	Battery	Battery negative terminal
B1	Balance	Connects between cell 1 and cell 2
B2	Balance	Connects between cell 2 and cell 3
B3	Balance	Connects between cell 3 and cell 4



Product Pictures:

