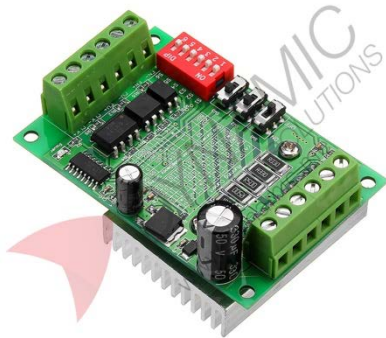


TB6560 3A Stepper Motor Driver



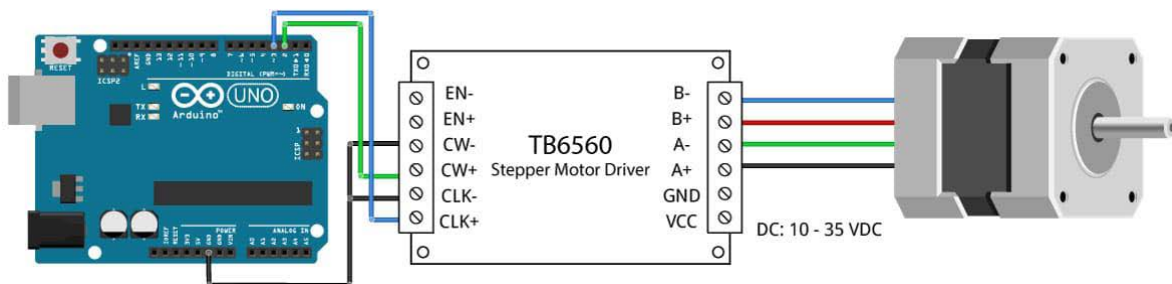
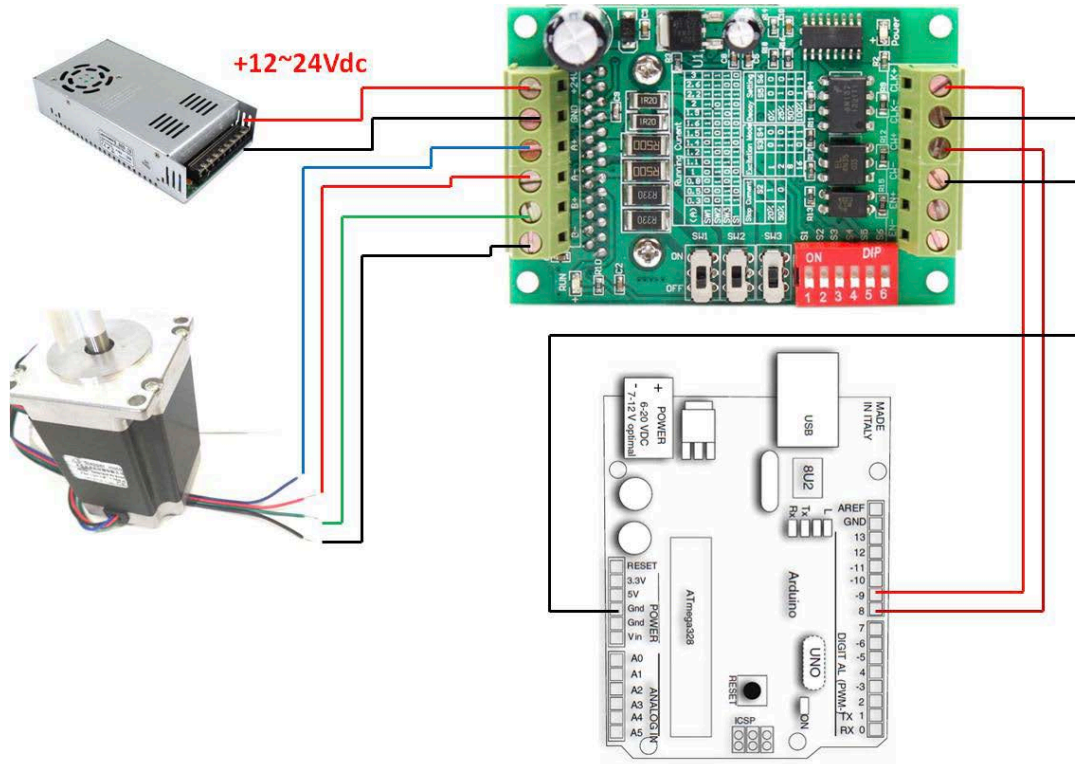
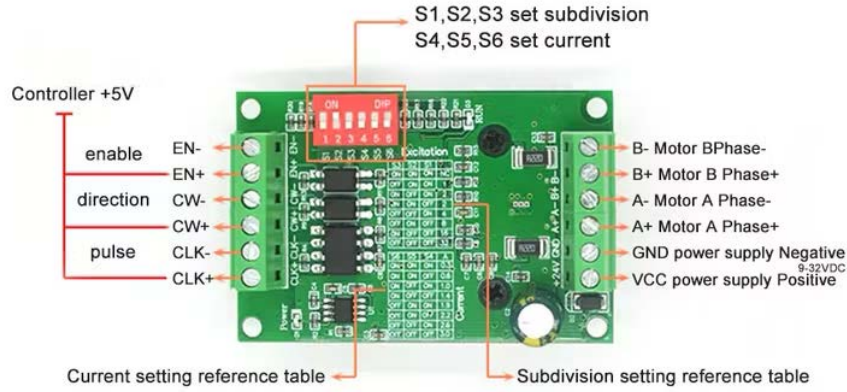
Features:

The TB6560 3A Stepper Motor Driver provides ± 3 A continuous output (3.5 A peak), operating on 10–35 V DC (24 V recommended). It offers low oscillation, high-speed bidirectional control of 2-phase bipolar stepper motors (NEMA-17/23), with selectable microstepping up to 1/16, and protections against low voltage, overheating, and over-current. Inputs are opto-isolated and support common-anode or cathode configurations.

Specifications	
Operating Voltage	10–35 V DC (24 V recommended)
Max Output Current	± 3 A continuous, 3.5 A peak
Microstepping Modes	full, $\frac{1}{2}$ -step, $\frac{1}{8}$ -step, $\frac{1}{16}$ -step
Protections	Low-voltage shutdown; over-current protection; over-temperature shutdown
Input Isolation	Type
Board Dimensions	75 × 50 × 35 mm

Pinouts:

Pin Name	Type	Description
+24V / GND	Power Input	Supply voltage (10–35 V DC, nominally 24 V)
A+ / A-	Output	A-phase of stepper motor
B+ / B-	Output	B-phase of stepper motor
CLK+ / CLK-	Input	Clock (step pulse) signal, positive and negative
CW+ / CW-	Input	Direction signal, positive and negative
EN+ / EN-	Input	Enable signal, positive and negative



Product Pictures:

